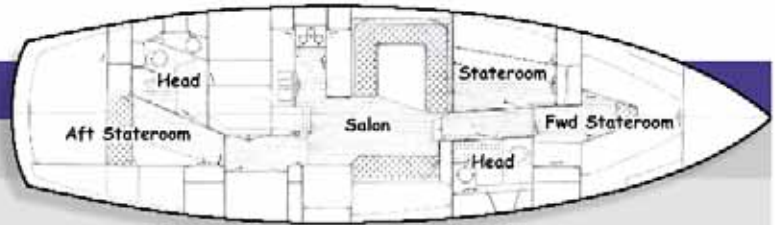


## Vessel

### Floor Plan and Interior



The S/V *Kirsten Anne* is a fiberglass 49' ketch rigged Transpacific built in 1979. Her beam is 13', draft 6', and she weighs 28 net tons. The main engine is a John Deere 4045T electronic capable of cruising at 8 knots. The Auxiliary is a 5 KW Northern Lights.

The cabin is varnished teak throughout, with brass lamps and fittings, and marble counters. The main salon amidship offers a spacious galley table that converts to a bunk, along with a settee and pilot berth starboard. Our galley features a refrigerator/freezer, a gimbaled propane stove and microwave, and offers up a delicious assortment of homemade meals. A chart table, head with shower, and the engine room lie aft.

Forward there is a private stateroom with two single bunks and plenty of drawer and closet space. A double berth on the port side just aft can be curtained off for privacy, with a head to starboard. In the stern, the master stateroom with a queen berth looks out Spanish galleon-style windows over the water, offering the most romantic evenings of your life. Pumps, electronic equipment, safety equipment, rigging, ground tackle and deck machinery are all modern and in excellent condition. There is also a 13' Achilles inflatable and 15 hp outboard, and two kayaks for shore leave!

*aft stateroom*



*pilot berth*



*main salon*



*galley table*



*forepeak stateroom*



*an adventure of a lifetime*